

blue<sup>®</sup>m

Surgical treatment of peri-implantitis supported by blue<sup>®</sup>m

Maïke Prick-Huisman, MSc.

**Maïke Prick-Huisman, MSc.**

2004-2009 Studied Dentistry at the Radboud University  
Nijmegen

After graduation, Maïke started a career as a professional  
horse trainer. She is multiple Dutch champion in reining and  
other western disciplines and she finished fourth at the  
European championship in youth reining.

2009-2012 Worked at several dental clinics

2010-2013 Worked at the centre of specialised dentistry at the  
Radboud University Nijmegen

2013-now Owner of dental practice H2 tandartsen Nijmegen



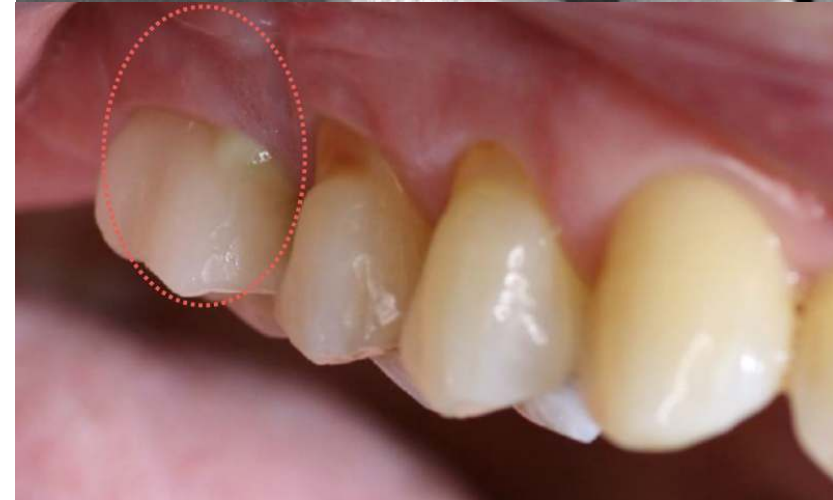
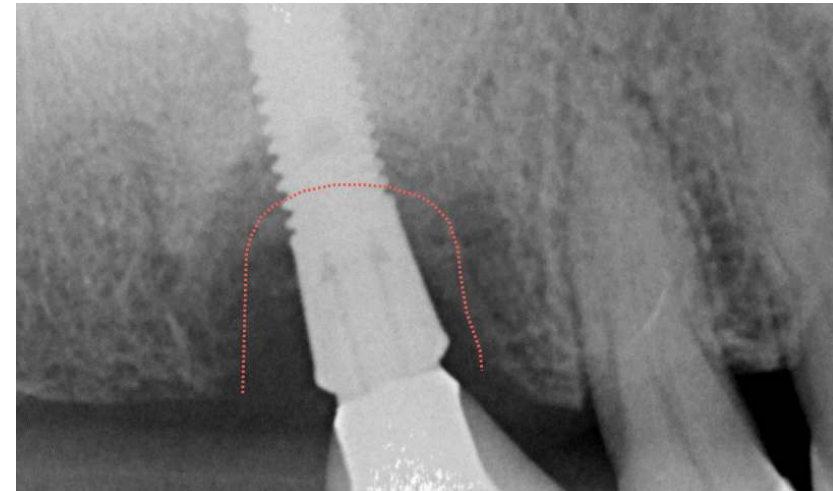
## Anamnesis

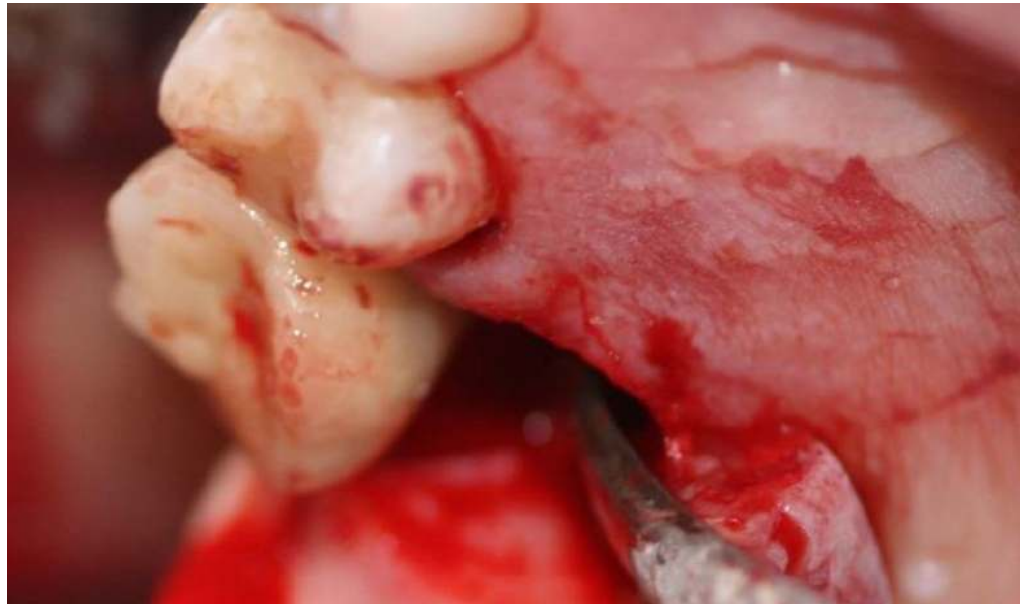
Patient complains about implant 16

Symptoms include tender and painful gums, odour, pus from all areas around the implant

Probing shows a 10mm pocket

After starting to improve the situation with blue®m oral gel, blue®m toothpaste and blue®m mouthwash 2 times daily, flap surgery is being done.





A lot of pus and granulation tissue shows after incision. The wound is cleaned and inflamed tissue is removed. The implant is cleaned with EMS perio airflow. Then, blue®m gel is applied and removed after two minutes.



The defect is filled with OsteoBiol Gen-Os and a OsteoBiol membrane is placed to protect the defect and to cover the grafted material. The wound is sutured and covered with blue®m oral gel.



The region still slightly swollen  
A mesial suture is placed for extra support  
Patient will start to apply blue®m oral gel to improve wound healing



Wound healing has improved  
Daily use of blue®m toothpaste and mouthwash  
Some loss of granulated bone occurred  
All sutures were removed



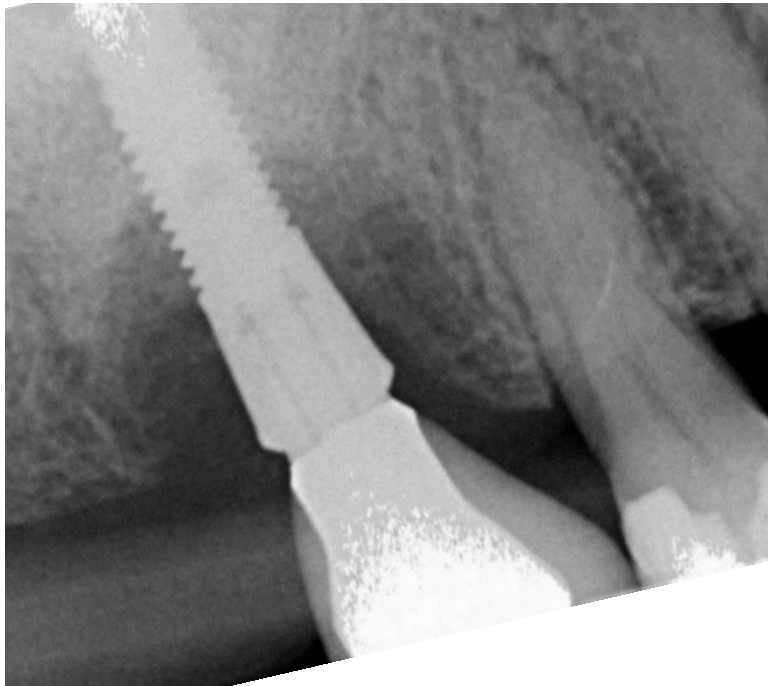
Patient applies blue®m oral gel with interdental brush daily  
Patient uses blue®m toothpaste and blue®m mouthwash two times a day  
No bleeding after probing  
Gingiva may come down a bit more cervical over time



Patient stopped using the interdental brush. We advised to start using the interdental brush with blue®m oral gel again  
X-ray shows bone and artificial bone at a normal level  
Gingival recession, gingiva may come down a bit more cervical  
Recall after six months at the dentist, patient visits dental hygienist every three months

# Surgical treatment of peri-implantitis supported by blue®m

## case report



Pre-operative



Five months post-operative





Pre-operative



Five months post-operative