

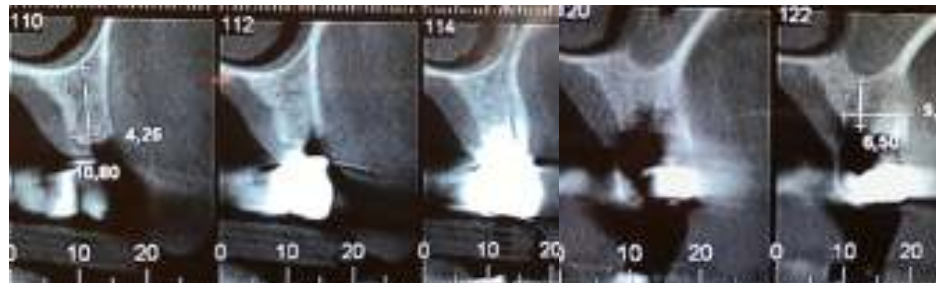
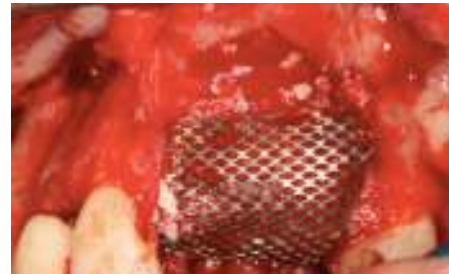
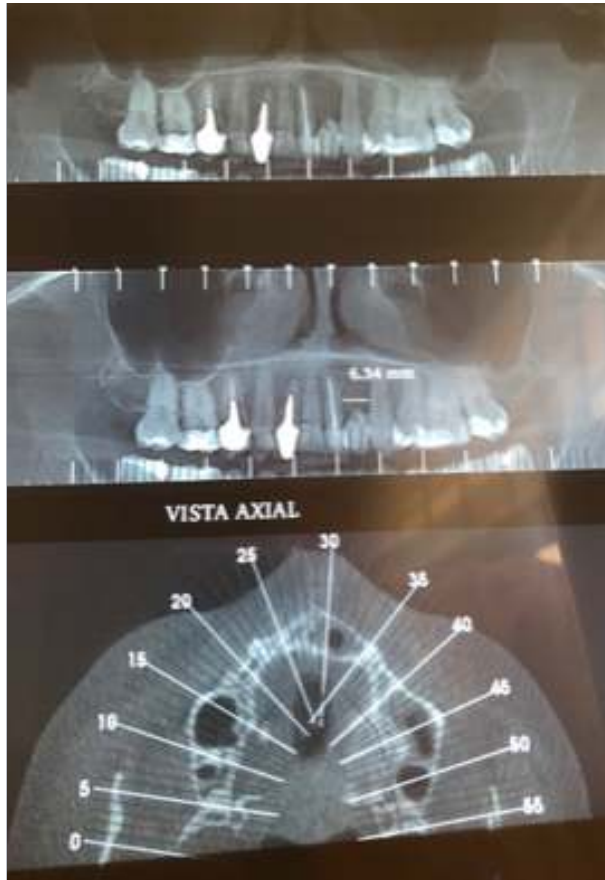
blue<sup>®</sup>m

Bone augmentation + L-PRF

The use of blue<sup>®</sup>m oral gel in wound healing: A 30-day review

# The use of blue®m oral gel in wound healing: A 30-day review

## case report



## The use of blue® oral gel in wound healing: A 30-day review

## case report

blue® oral gel is applied on the closed and sutured wound after extracting the front teeth, placing a titanium mesh with bone grafting material and covering it with L-PRF membranes.



# The use of blue®m oral gel in wound healing: A 30-day review

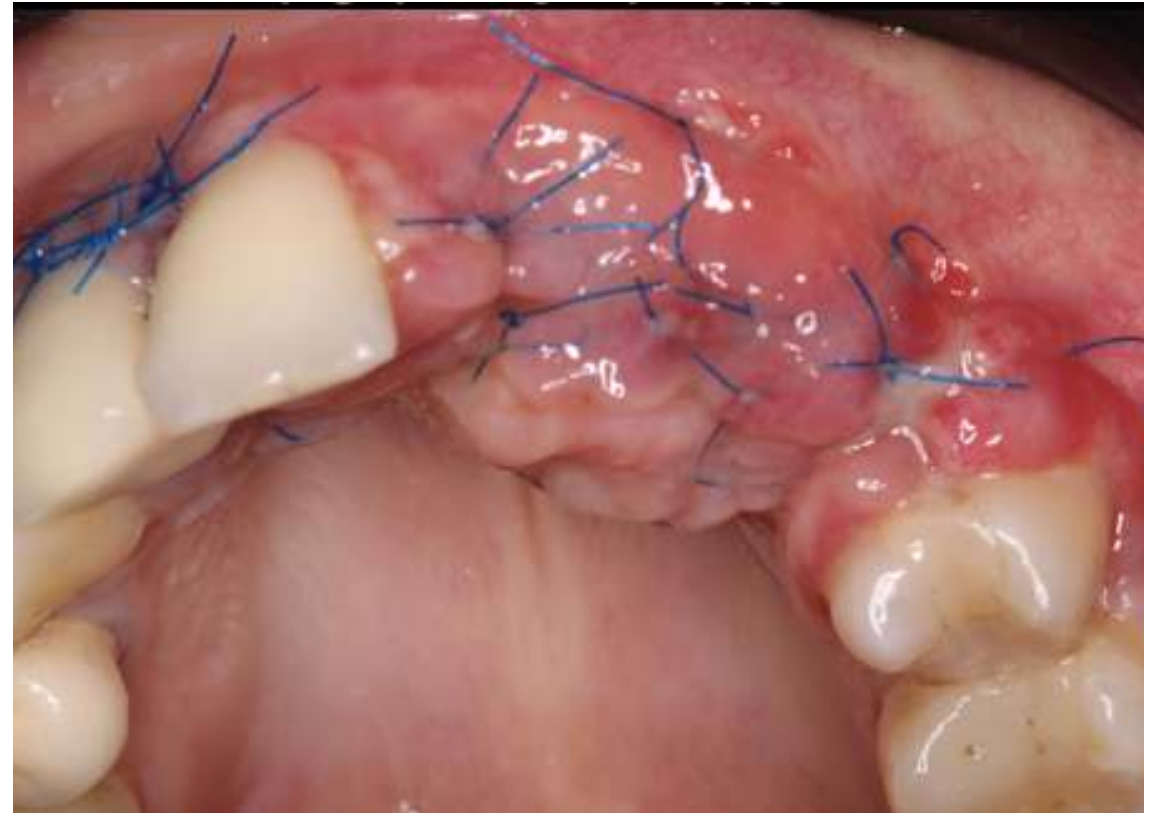
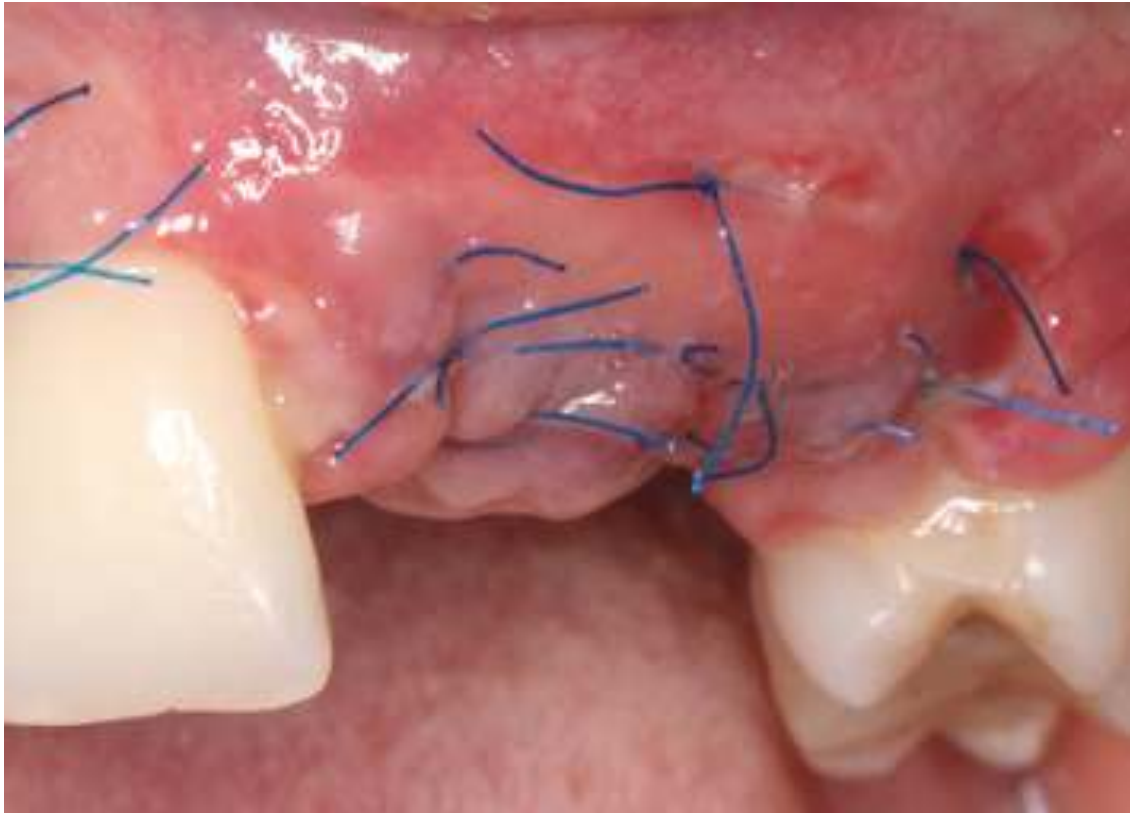
## case report



A temporary prosthesis is placed



Front view of the temporary situation



Postoperative control after 10 days



Postoperative control and removal of the sutures after 20 days



Postoperative control after 30 days of recovery with blue®m oral gel